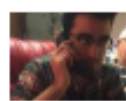


# MAPPED: Where New York City's millions of square feet of farmland are hidden



Frank Chaparro

Jun. 5, 2017, 4:22 PM 🔥 3,250

FACEBOOK
 LINKEDIN
 TWITTER

New York City is a concrete jungle.

But hidden amongst the seemingly endless pavement, subway tracks, and towering skyscrapers are hundreds of community gardens and farms. They provide some of the hundreds of millions of pounds of produce New York retailers require yearly.

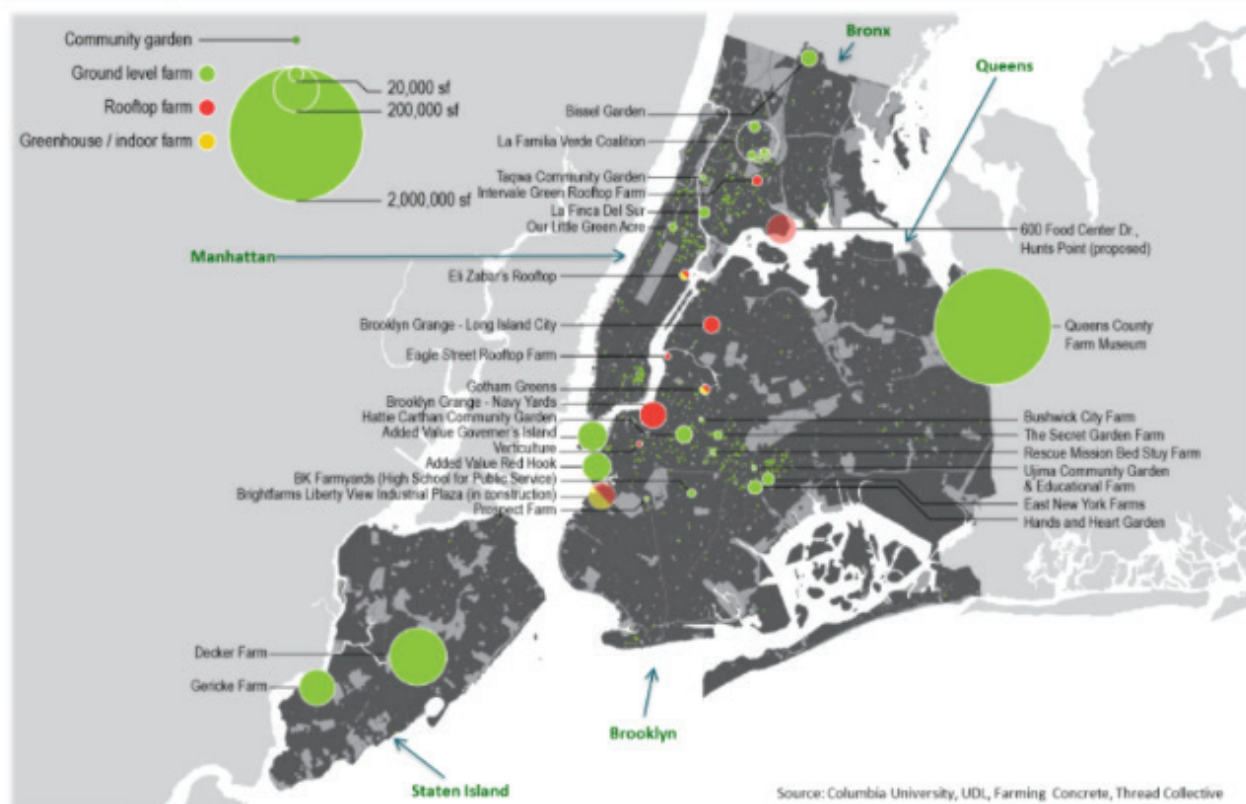
In the 2017 edition of its annual TransformingWorld Atlas, which uses maps to illustrate global economic, political and investment trends, Bank of America Merrill Lynch included a map of the five boroughs and their numerous farms, greenhouses, and community gardens.

The map identifies 28 farms and more than 600 community gardens. However, it does not specify the total amount of farmland in the city. The farms on the map are represented by a circle with a white border. The larger the circle, the larger the farm. Green circles represent traditional ground level farms, whereas red circles indicate rooftop farms and yellow circles indicate greenhouses or indoor farms. New York City's community gardens are represented by green dots.

The largest ground level farms by square footage can be found in Staten Island and Queens. At about 2 million square feet, [Queens County Farm Museum](#) in Floral Park is by far the Big Apple's biggest. The farm, which traces its roots to 1697, boosts New York City's only corn maze as well as fresh honey and eggs.

By comparison, one of Manhattan's largest farms, Eli Zabar's Rooftop Garden is about 20,000 square feet (that's about a third of the size of an average football field). It is both a rooftop farm and greenhouse, producing tomatoes, herbs, and lettuce, [according to its website](#).

**Exhibit 56: Urban Agriculture**  
Farming in New York City



Source: Columbia University, UDL, Farming Concrete, Thread Collective